

# **FELIPE DE ALMEIDA RIBEIRO**

**« meu sonho conduz minha inatenção »**

solo piano

SCORE

piano solo

PARTITURA

## INTRODUCTION

“...meu sonho conduz minha inatenção...” is a piano etude written to explore several dynamic and resonance possibilities in the instrument. The entire etude is intended to be played at the threshold of soft dynamics, but absolute silence should never be reached. Resonance is another characteristic in this piece, which requires several combinations of the three pedals in addition to different playing techniques. These different combinations result in a complex palette of resonant sonorities. The entire etude last around 5 minutes.

## GENERAL INSTRUCTIONS

1. All clusters are chromatic. The two written notes represent the extremities of each cluster.
2. The ornamentations should be played as fast as possible and are part of the next note beat.
3. Notes in parenthesis show what is to be heard. It represents what is being held by the pedal/keys and works also as a reminder that even blank measures are filled with some sort of resonant texture.

4. Fermatas are used to create temporal fluctuations throughout the entire work. The figure shows a long, medium and short fermatas, respectively. All three kinds have no strict duration and must be determined by each player (short fermatas are slight deviation of the duration in question).



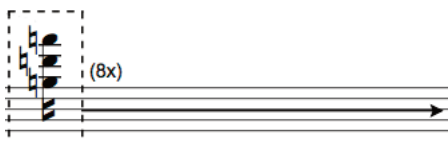
5. Tremolos: usually represented by slashes in a note's stem. One slash means regular and slow while three slashes means as fast as possible and irregular. The arrow represents a gradual change between the two types of tremolo.



6. Resonant attack: the black notehead represents the normal kind of attack while the diamond notehead is the resonant key to be held right after attacking the first one. This technique is normally used within one key.



7. Repetitions signs are usually placed within a box with an arrow indicating the total duration in parenthesis. Everything inside the box should be repeated in the given rhythm (as a loop).



escrito e dedicado a Catarina Domenici

# "...meu sonho conduz minha inatenção..."

ca. 46

Felipe Ribeiro (1980)

Extremamente frágil...

Musical score for the first system, measures 46-50. The score is in 4/4 time and features a piano part with dynamic markings *sffz*, *p*, *(p)*, and *mp*. The right hand has a melodic line with slurs and accents, while the left hand provides harmonic support. A *Sost.* (Sostenuto) marking is present, with a note "Una corda" below it. The instruction "senza una corda" appears at the end of the system. The tempo is marked "a tempo".

Musical score for the second system, measures 51-55. The score is in 4/4 time and features a piano part with dynamic markings *sffz*, *ppp*, *p*, *sfz*, and *p*. The right hand has a melodic line with slurs and accents, while the left hand provides harmonic support. A *Ped.* (Pedal) marking is present, with a note "una corda" below it. The tempo is marked "a tempo".

Musical score for the third system, measures 56-60. The score is in 2/4 time and features a piano part with dynamic markings *ppp*, *mp*, and *mp*. The right hand has a melodic line with slurs and accents, while the left hand provides harmonic support. A *Ped.* (Pedal) marking is present, with a note "(una corda)" below it. The tempo is marked "ca. 46".

(♩ ca. 46) ♩ ca. 46

*p* *mp* *ppp* *mp*

Ped.  
(una corda)

*p* *sfz* *ppp* *mp* *ppp*

a tempo

Ped. Sost. Ped.

senza una corda Una corda

♩ ca. 80

*ppp* *p* *ppp*

(una corda)

15 (18x)

Ped.

♩ ca. 60

*p* *ppp* *p* *mp*

(una corda)

14x

Ped.

20

*pp* *mp* *mp* *ppp* *a tempo*

*p*

*Ped.*  
(una corda)

ca. 80

25

*ppp* *(ppp)* *mp* *p (r.h.)* *(12x)*

*Ped.*  
(una corda)

poco rall.

*p* *(8x)* *ppp* *ppp* *(7x)*

*Ped.*

ca. 46

30

*ppp* *p* *sfz* *mp* *p*

*(una corda)* *Ped.* *senza una corda* *Sost.* *Ped.*

(ca. 46)

3:2  
a tempo  
ca. 40  
ppp  
p  
(una corda)  
(10x)  
sfz  
senza una corda



3:2  
mp  
ppp  
Ped.  
una corda  
ppp  
p



poco rall.

35  
sfz  
sfz  
Ped.  
senza una corda

(♩ ca. 40)

40

This system of music is written in 4/4 time. The upper staff (treble clef) begins with a half note chord of G#4 and A4, marked *sfz*. The lower staff (bass clef) starts with a half note chord of G2 and A2, also marked *sfz*. A first measure rest is indicated by a bracket labeled *Ped.*. The second measure features a half note chord of Bb3 and A3 in the upper staff, and a half note chord of G2 and A2 in the lower staff, both marked *sfz*. A second measure rest is indicated by a bracket labeled *Ped.*. The system concludes with a fermata over the final chord in both staves.



This system of music continues from the first system. The upper staff (treble clef) begins with a half note chord of G#4 and A4, marked *sfz*. The lower staff (bass clef) starts with a half note chord of G2 and A2, also marked *sfz*. A first measure rest is indicated by a bracket labeled *Ped.*. The second measure features a half note chord of Bb3 and A3 in the upper staff, and a half note chord of G2 and A2 in the lower staff, both marked *sfz*. A second measure rest is indicated by a bracket labeled *Ped.*. The system concludes with a fermata over the final chord in both staves.